

GREATER SOUTHEAST MANAGEMENT DISTRICT

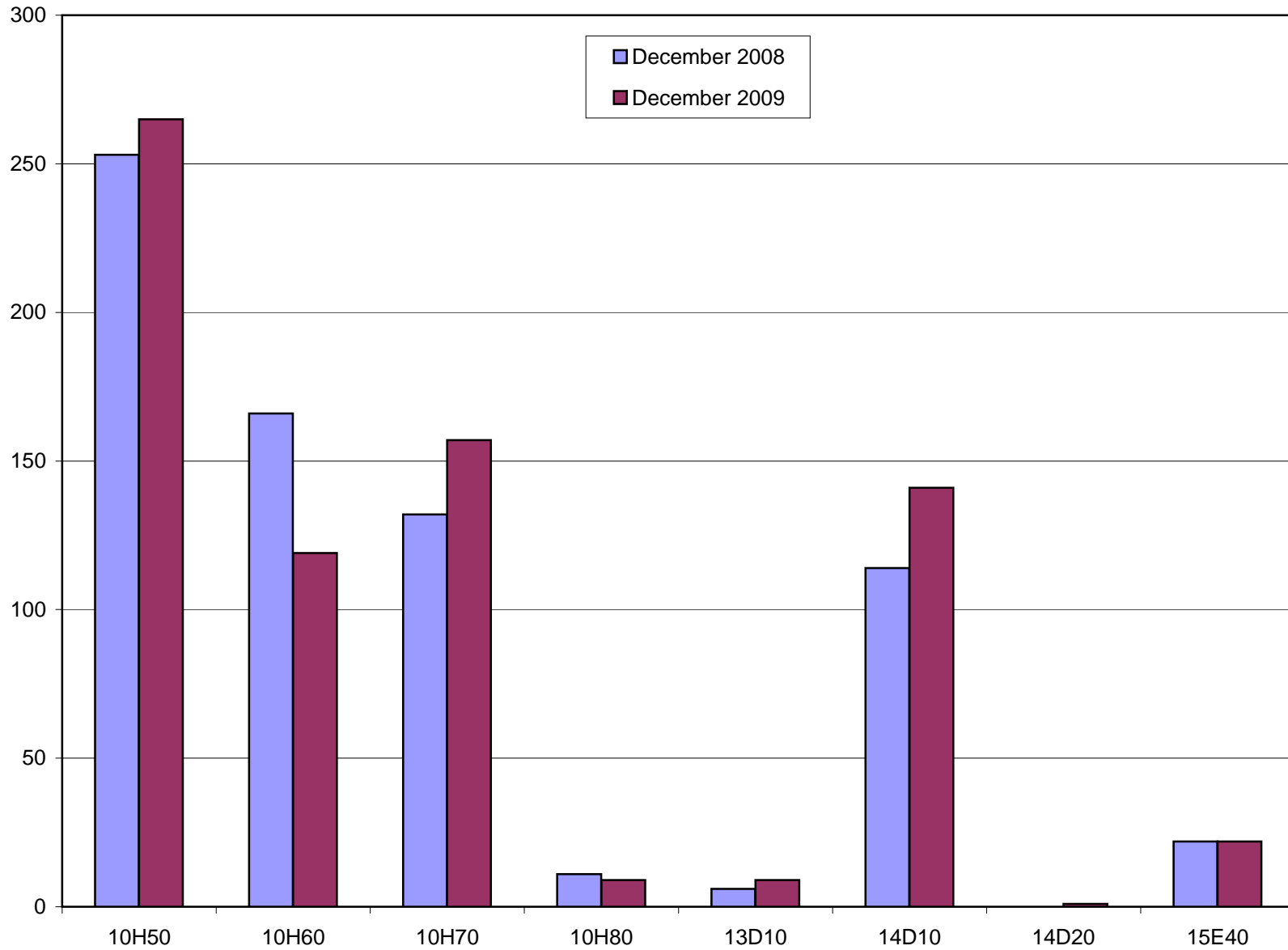
Number of Incidents for December 2009	BEATS								
OFFENSE	10H50	10H60	10H70	10H80	13D10	14D10	14D20	15E40	Grand Total
Aggravated Assault	25	9	2	2	0	3	1	0	42
All other Offenses (Except Traffic)	8	5	12	1	0	4	0	0	30
Arson	0	0	0	0	0	0	0	0	0
Auto Theft	11	11	10	0	0	7	0	1	40
Burglary	22	14	9	0	2	26	0	4	77
Criminal Mischief	21	7	10	0	1	14	0	3	56
Disorderly Conduct	15	5	13	0	0	3	0	0	36
Drunkenness	6	2	2	0	0	2	0	1	13
DWI	4	3	2	0	0	1	0	0	10
Embezzlement	0	1	1	0	1	0	0	0	3
Forgery	0	1	7	0	1	3	0	0	12
Fraud	3	0	0	0	0	1	0	0	4
Gambling	0	0	0	0	0	0	0	0	0
Liquor Laws	0	0	0	0	0	0	0	0	0
Murder	0	0	0	0	0	0	0	0	0
Narcotic	28	4	5	0	0	7	0	0	44
Offenses Against Family & Children	2	1	2	0	0	0	0	0	5
Other Assaults	43	26	21	3	0	22	0	2	117
Prostitution	12	1	0	0	0	0	0	1	14
Robbery	18	11	8	0	0	13	0	2	52
Sex Offenses (Except Rape and Prostitution)	0	1	0	0	0	0	0	1	2
Sexual Assault	2	0	1	0	0	0	0	0	3
Stolen Property	0	0	0	0	0	0	0	0	0
Theft (Includes BMV)	43	15	52	3	4	33	0	7	157
Vagrancy	0	0	0	0	0	0	0	0	0
Weapons	2	2	0	0	0	2	0	0	6
Grand Total	265	119	157	9	9	141	1	22	723

GREATER SOUTHEAST MANAGEMENT DISTRICT

Number of Incidents for December 2008	BEATS								
OFFENSE	10H50	10H60	10H70	10H80	13D10	14D10	14D20	15E40	Grand Total
Aggravated Assault	13	14	6	0	1	6	0	1	41
All other Offenses (Except Traffic)	12	4	11	0	0	4	0	0	31
Arson	0	0	0	0	0	0	0	0	0
Auto Theft	13	10	3	1	1	7	0	1	36
Burglary	20	22	5	1	0	20	0	5	73
Criminal Mischief	14	15	4	0	1	23	0	1	58
Disorderly Conduct	19	4	5	0	0	3	0	1	32
Drunkenness	5	0	1	1	0	1	0	0	8
DWI	0	0	3	2	0	1	0	0	6
Embezzlement	0	1	1	1	0	0	0	0	3
Forgery	0	3	5	0	1	3	0	1	13
Fraud	0	3	0	0	0	0	0	0	3
Gambling	0	0	0	0	0	0	0	0	0
Liquor Laws	0	0	0	0	0	0	0	0	0
Murder	0	0	0	0	0	0	0	1	1
Narcotic	60	14	14	0	0	1	0	0	89
Offenses Against Family & Children	0	2	2	0	0	3	0	0	7
Other Assaults	50	30	15	1	1	9	0	0	106
Prostitution	8	3	2	0	0	0	0	1	14
Robbery	16	6	0	0	0	7	0	2	31
Sex Offenses (Except Rape and Prostitution)	0	1	0	0	0	0	0	0	1
Sexual Assault	1	0	0	0	0	0	0	0	1
Stolen Property	0	0	0	0	0	0	0	0	0
Theft (Includes BMV)	19	31	54	4	1	26	0	8	143
Vagrancy	0	0	0	0	0	0	0	0	0
Weapons	3	3	1	0	0	0	0	0	7
Grand Total	253	166	132	11	6	114	0	22	704

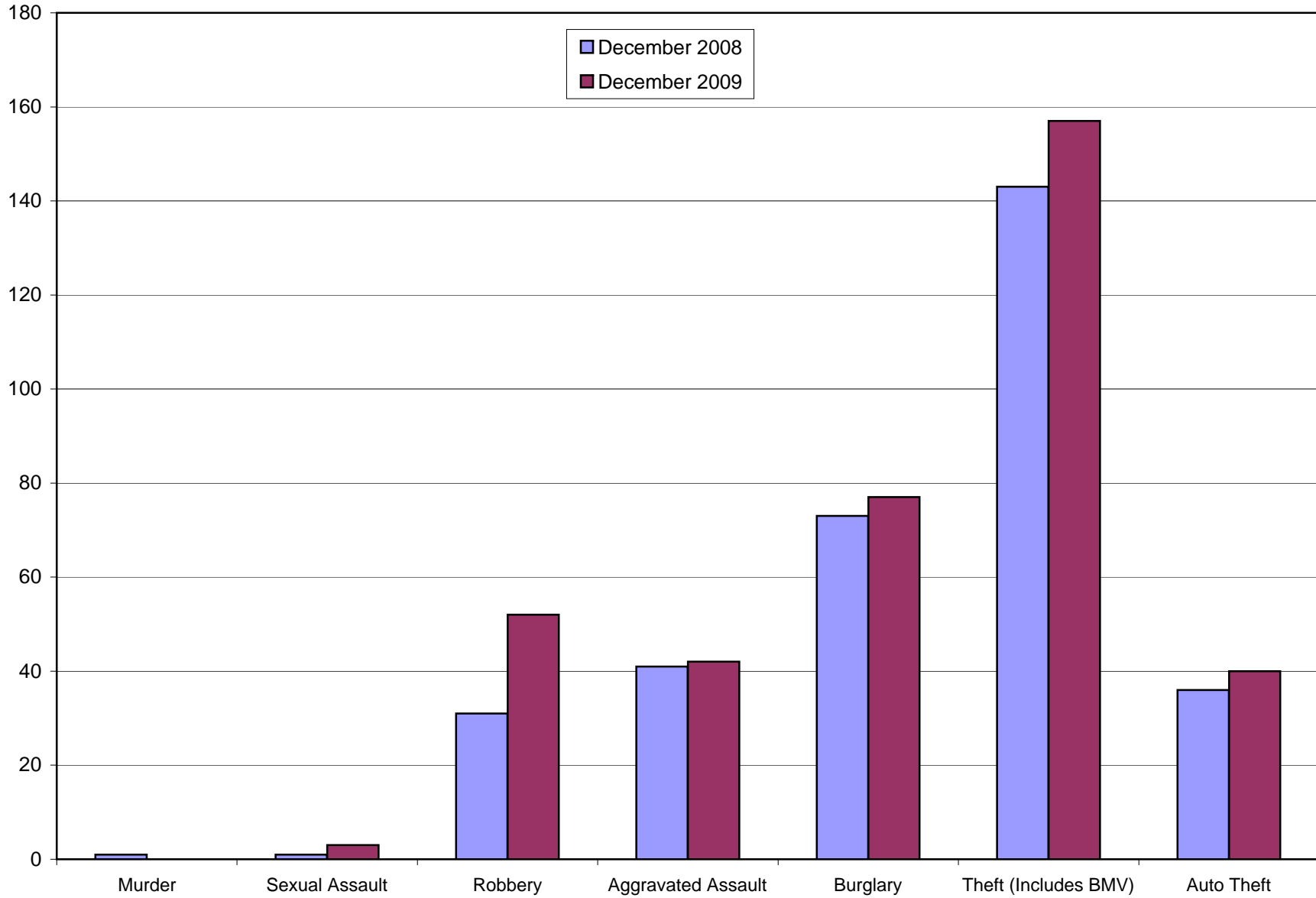
GREATER SOUTHEAST MANAGEMENT DISTRICT

ALL CRIME COMPARED BY BEAT



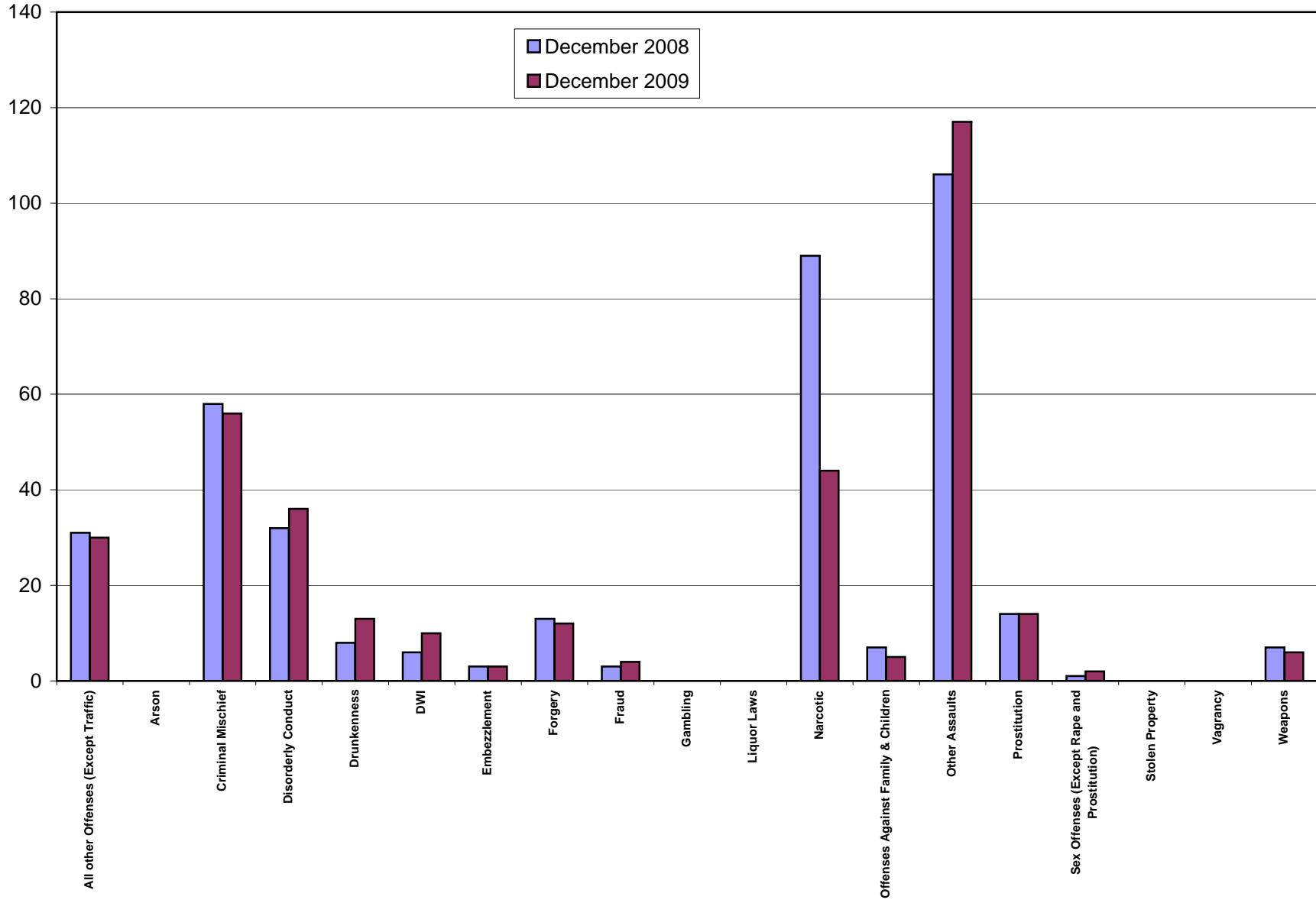
GREATER SOUTHEAST MANAGEMENT DISTRICT

PART 1 CRIME - SAME MONTH COMPARISON



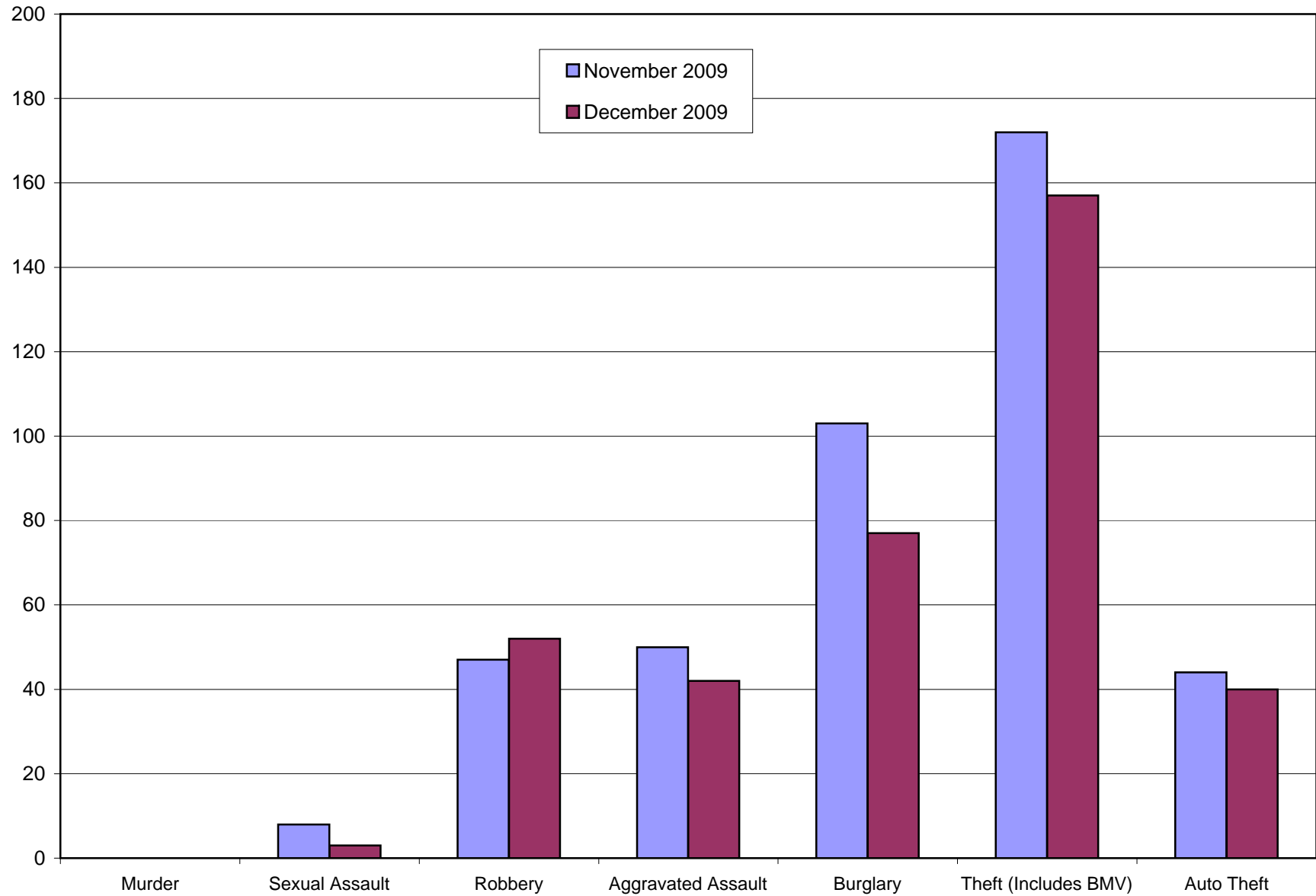
GREATER SOUTHEAST MANAGEMENT DISTRICT

PART 2 CRIME - SAME MONTH COMPARISON



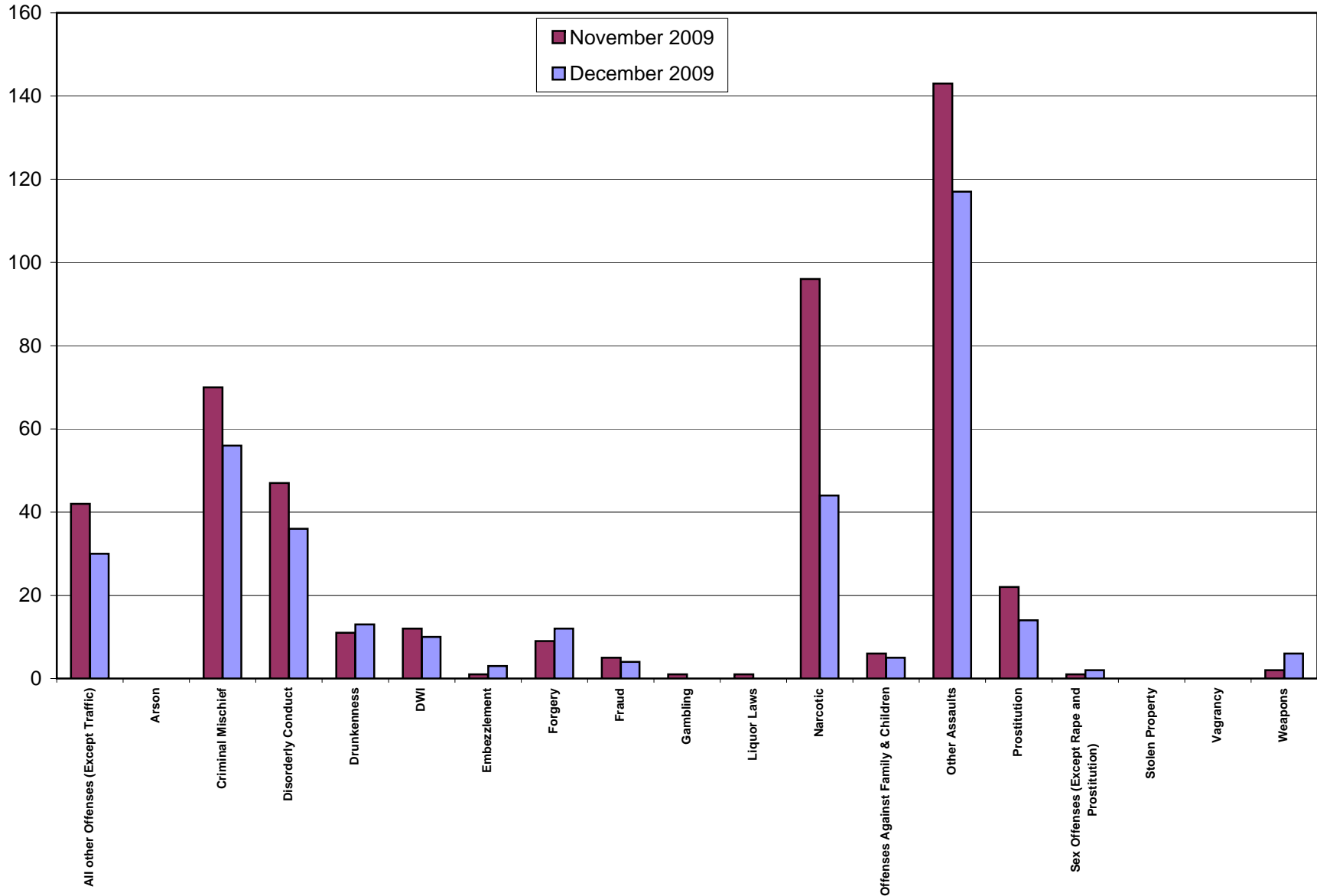
GREATER SOUTHEAST MANAGEMENT DISTRICT

PART 1 CRIME - PRIOR MONTH COMPARISON



GREATER SOUTHEAST MANAGEMENT DISTRICT

PART 2 CRIME - PRIOR MONTH COMPARISON



GREATER SOUTHEAST MANAGEMENT DISTRICT

Legend

Part One Crimes

- ★ Murder
- ✱ Sexual Assault
- Robbery
- Aggravated Assault
- ▲ Burglary
- ◆ Theft (Includes BMV)
- ⊗ Auto Theft

Part Two Crimes

- Other Assaults
- Arson
- Forgery
- Fraud
- Embezzlement
- Criminal Mischief
- Prostitution
- Sex Offenses (Except Rape and Prostitution)
- Narcotic
- Gambling
- Offenses Against Family & Children
- DWI
- Drunkenness
- Liquor Laws
- Disorderly Conduct
- All other Offenses (Except Traffic)
- Stolen Property
- Vagrancy
- Weapons

- SE Southeast Management District
- ★ South Central
- 21 - Palm Center
- 23 - Southmore
- Roads
- Rail Roads

BEATS

- 10H50
- 10H60
- 10H70
- 10H80
- 13D10
- 14D10
- 14D20
- 15E40

OFFENSE	BEATS								Grand Total
	10H50	10H60	10H70	10H80	13D10	14D10	14D20	15E40	
Aggravated Assault	25	9	2	2	0	3	1	0	42
All other Offenses (Except Traffic)	8	5	12	1	0	4	0	0	30
Arson	0	0	0	0	0	0	0	0	0
Auto Theft	11	11	10	0	0	7	0	1	40
Burglary	22	14	9	0	2	26	0	4	77
Criminal Mischief	21	7	10	0	1	14	0	3	56
Disorderly Conduct	15	5	13	0	0	3	0	0	36
Drunkenness	6	2	2	0	0	2	0	1	13
DWI	4	3	2	0	0	1	0	0	10
Embezzlement	0	1	1	0	1	0	0	0	3
Forgery	0	1	7	0	1	3	0	0	12
Fraud	3	0	0	0	0	1	0	0	4
Gambling	0	0	0	0	0	0	0	0	0
Liquor Laws	0	0	0	0	0	0	0	0	0
Murder	0	0	0	0	0	0	0	0	0
Narcotic	28	4	5	0	0	7	0	0	44
Offenses Against Family & Children	2	1	2	0	0	0	0	0	5
Other Assaults	43	26	21	3	0	22	0	2	117
Prostitution	12	1	0	0	0	0	0	1	14
Robbery	18	11	8	0	0	13	0	2	52
Sex Offenses (Except Rape and Prostitution)	0	1	0	0	0	0	0	1	2
Sexual Assault	2	0	1	0	0	0	0	0	3
Stolen Property	0	0	0	0	0	0	0	0	0
Theft (Includes BMV)	43	15	52	3	4	33	0	7	157
Vagrancy	0	0	0	0	0	0	0	0	0
Weapons	2	2	0	0	0	2	0	0	6
Grand Total	265	119	157	9	9	141	1	22	723

